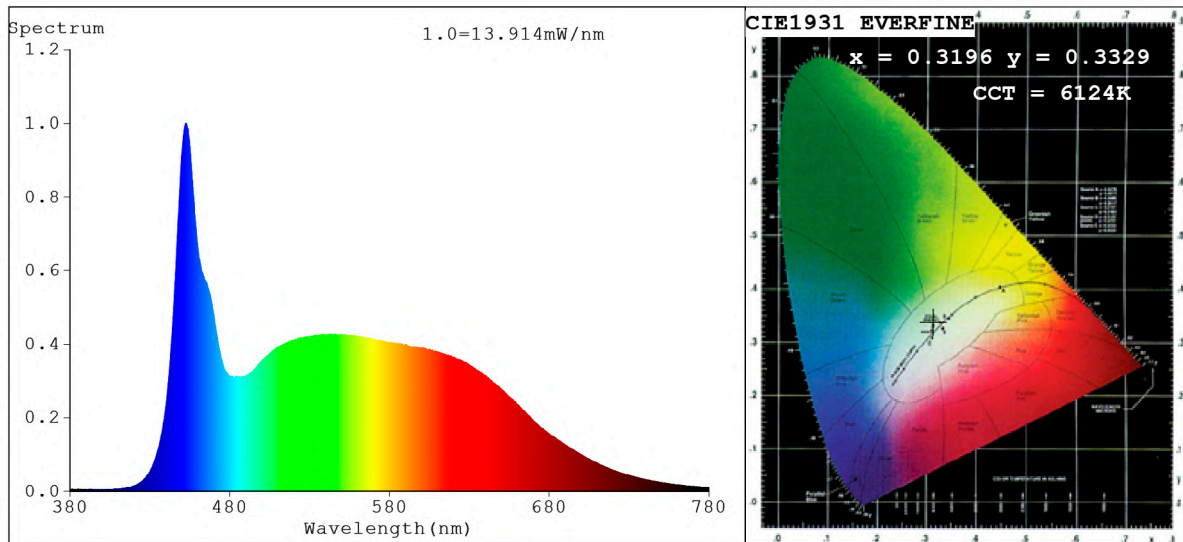


Spectrum Test Report



Color Parameters:

Chromaticity Coordinate: $x=0.3196$ $y=0.3329$ $u'=0.2011$ $v'=0.4714$
 CCT=6124K (Duv=0.0018) Dominant WL:Ld =491.3nm Purity=4.7%
 Ratio:R=15.5% G=78.0% B=6.5%; Peak WL:Lp=452.6nm FWHM=24.3nm
 Render Index:Ra=93.0 CRI=89.9 TM30:Rf=89 Rg=98
 R1 =94 R2 =98 R3 =97 R4 =91 R5 =92 R6 =93 R7 =93
 R8 =87 R9 =69 R10=93 R11=92 R12=66 R13=96 R14=99 R15=92

Photo Parameters:

Flux = 404.4 lm Eff. : 91.86 lm/W Fe = 1.415 W Scotopic:943.98 S/P:2.3345

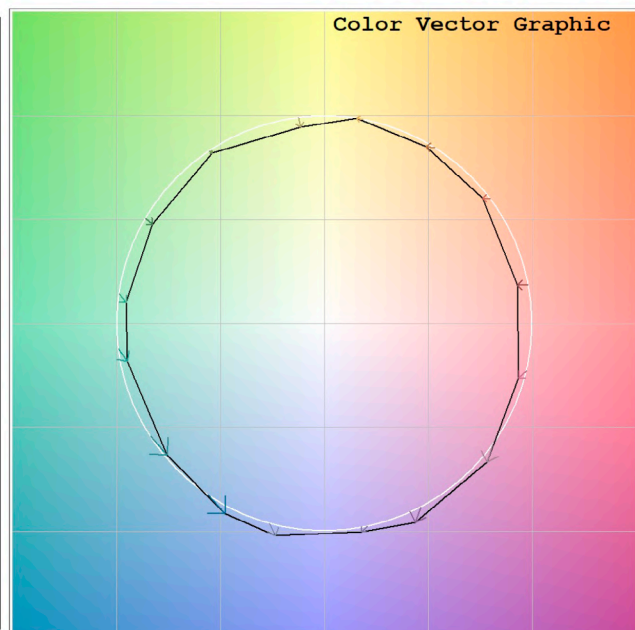
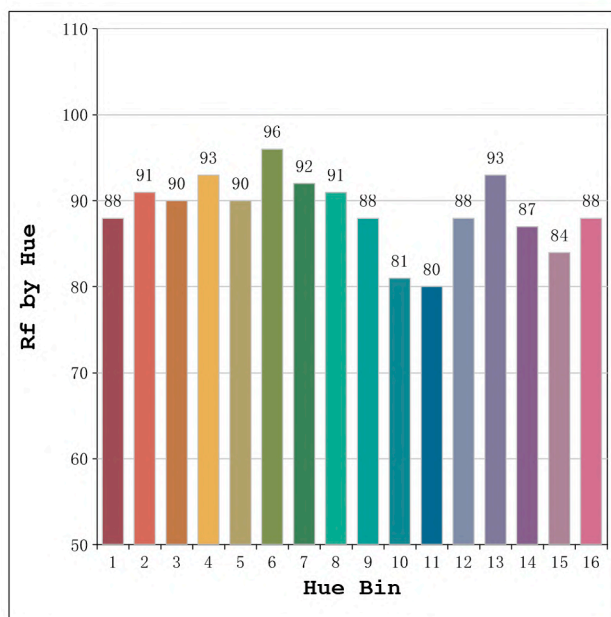
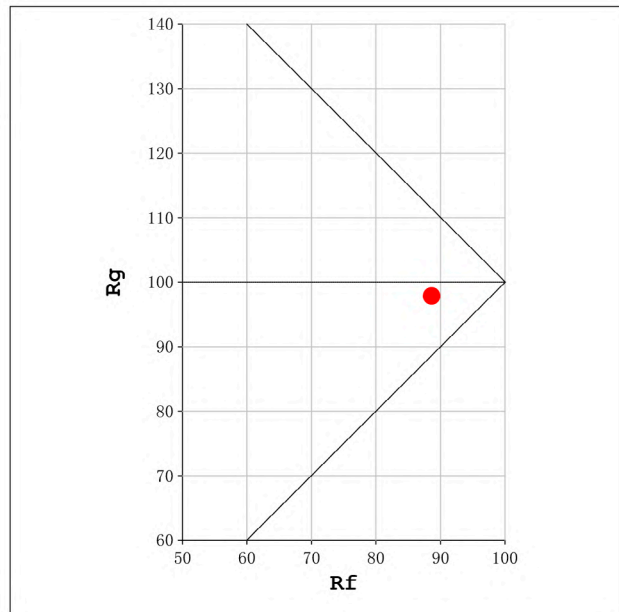
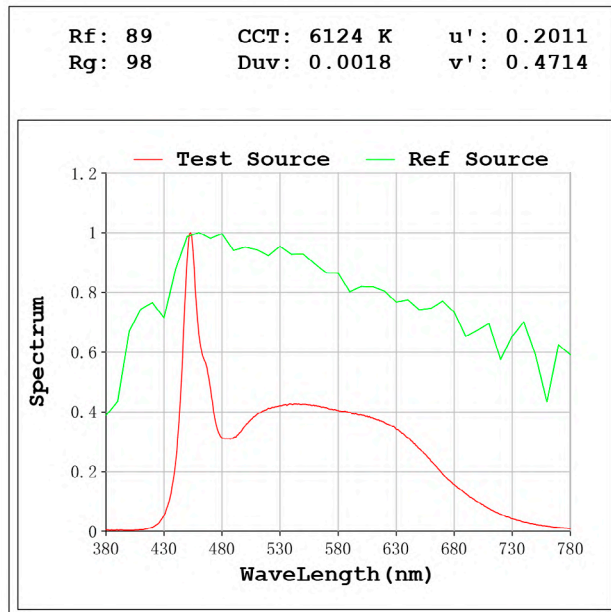
Electrical parameters:

V = 11.998 V I = 0.3669 A P = 4.402 W PF = 1.000

Status: Integral T = 2000 ms Ip = 39732 (61%)

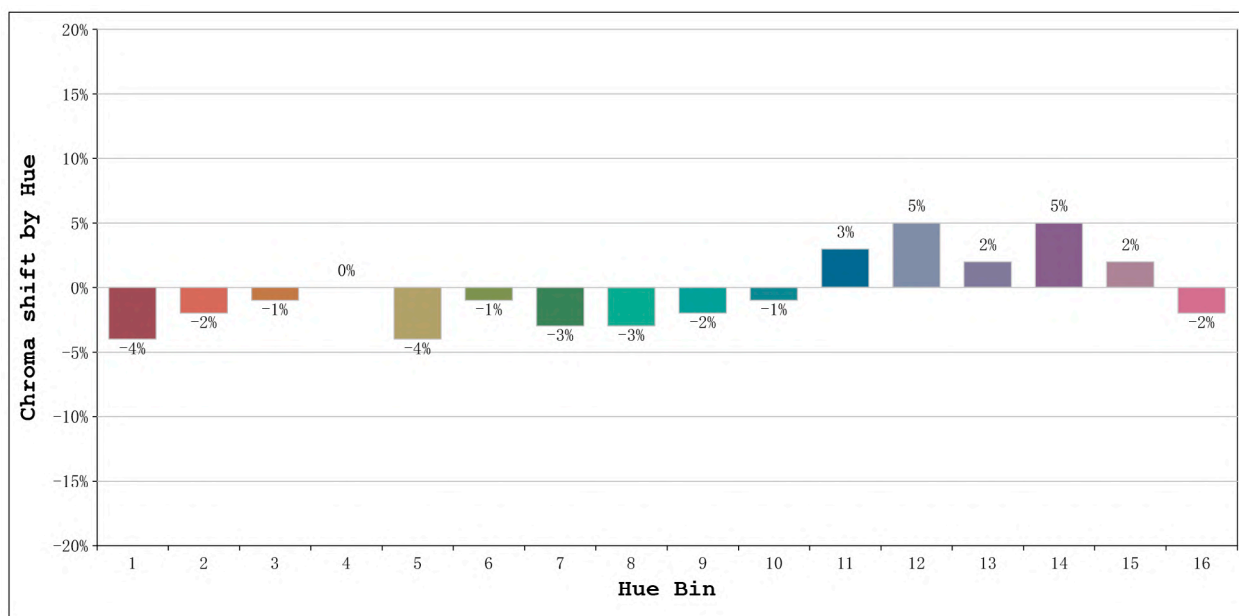
Model:Ecoled ibiza pro 6300K
 Tester:Sergio Carneros
 Temperature:20Deg
 Manufacturer:Luz Negra

Number: 30.094
 Date:2022-02-02 08:02:35
 Humidity:50%
 Remarks:100cm de tira flexible



Model:Ecoled ibiza pro 6300K
 Tester:Sergio Carneros
 Temperature:20Deg
 Manufacturer:Luz Negra

Number: 30.094
 Date:2022-02-02 08:02:35
 Humidity:50%
 Remarks:100cm de tira flexible



Hue Bin	Hue Angle	Rf	Graphic shift(%)	
			Chroma	Hue
1	0.0° - 22.5°	88	-4	1
2	22.5° - 45.0°	91	-2	2
3	45.0° - 67.5°	90	-1	4
4	67.5° - 90.0°	93	0	3
5	90.0° - 112.5°	90	-4	0
6	112.5° - 135.0°	96	-1	0
7	135.0° - 157.5°	92	-3	0
8	157.5° - 180.0°	91	-3	3
9	180.0° - 202.5°	88	-2	7
10	202.5° - 225.0°	81	-1	12
11	225.0° - 247.5°	80	3	12
12	247.5° - 270.0°	88	5	4
13	270.0° - 292.5°	93	2	-2
14	292.5° - 315.0°	87	5	-5
15	315.0° - 337.5°	84	2	-8
16	337.5° - 360.0°	88	-2	-3

Model:Ecoled ibiza pro 6300K
 Tester:Sergio Carneros
 Temperature:20Deg
 Manufacturer:Luz Negra

Number: 30.094
 Date:2022-02-02 08:02:35
 Humidity:50%
 Remarks:100cm de tira flexible